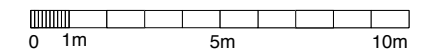


----- Approx. site boundary



Revisions First issued: 04.1.18 Q.S.

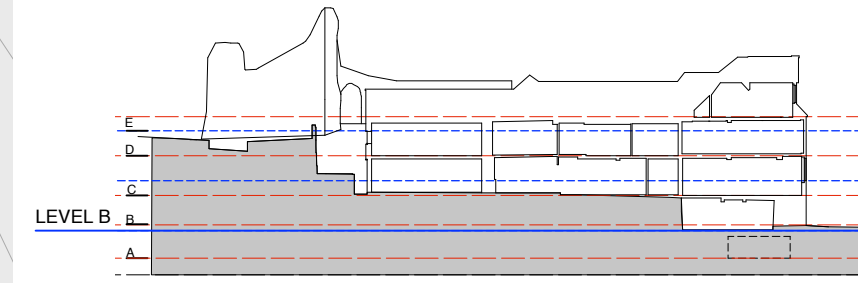
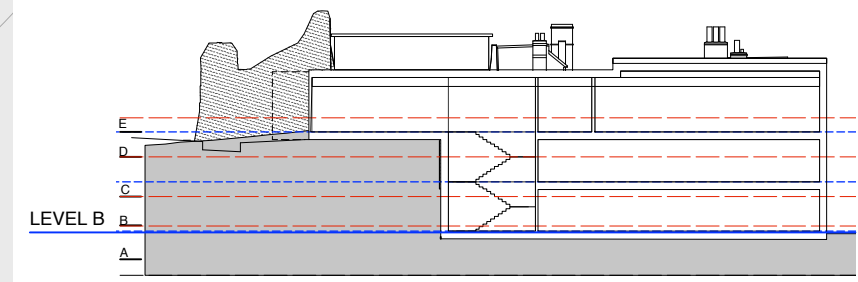
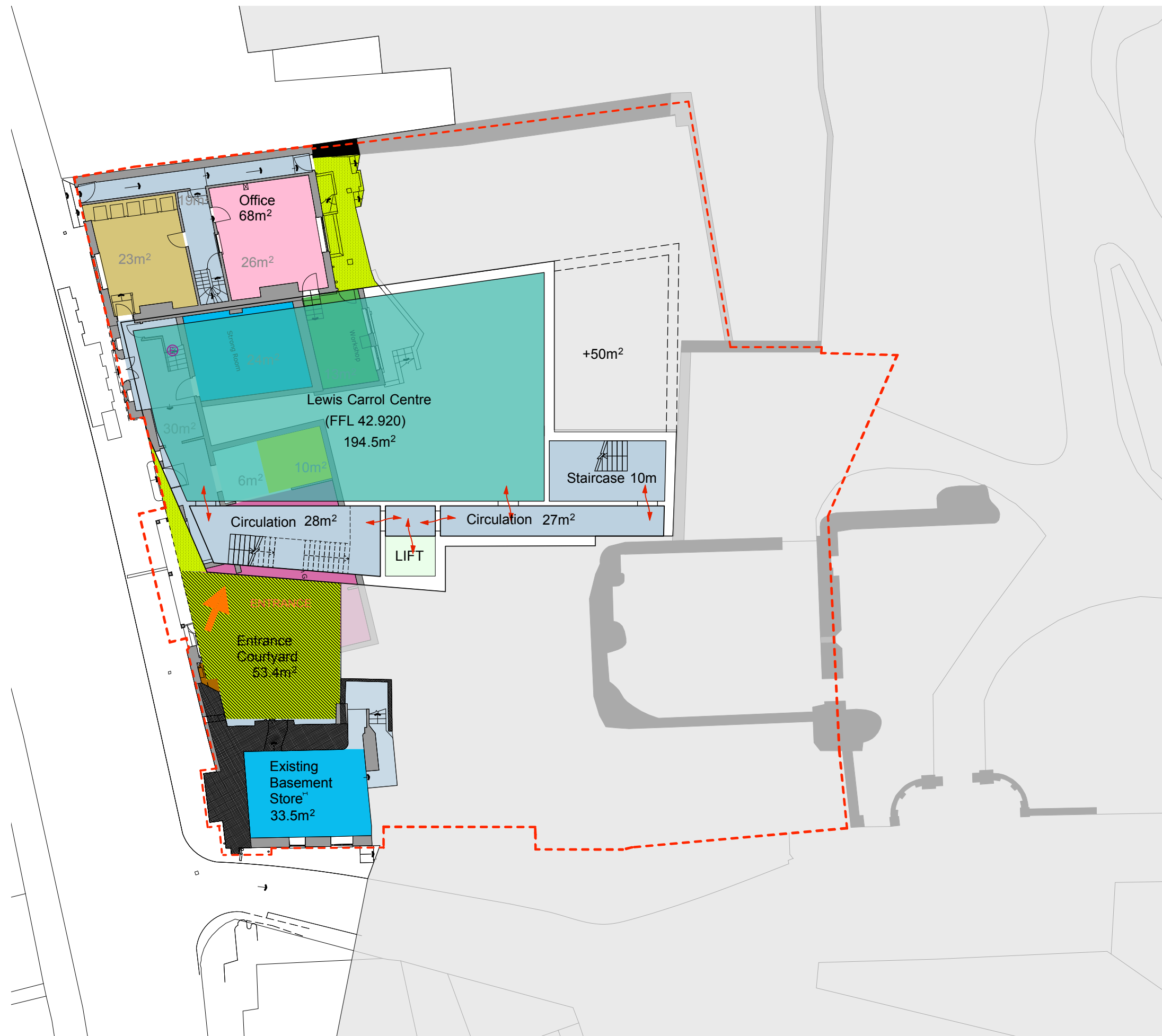
- Note 1
- Do not scale from this drawing
  - Use figured dimensions only
  - Dimensions shown in millimetres
  - All dimensions given to finished surfaces
  - Not to be used as fabrication drawings
  - Allow for minimum working tolerances
  - Verify all dimensions on site
  - Inform Architect of any discrepancies
  - Refer to Specification/Finishes Schedule
  - Allow for all making good consequent upon the works

## For Information

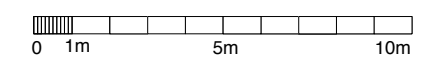
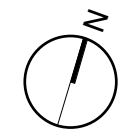
No. GMC/SK/29 Rev \_\_  
 Scale 1:200 @ A3  
 Date 09/17  
 Project Guildford Museum and Castle  
 Title Option C1: Level A

# ZMMA

25b Underwood Street  
 London N1 7LG  
 T +44 (0)20 7251 8888  
 F +44 (0)20 7251 8080  
 E info@zmma.com



----- Approx. site boundary



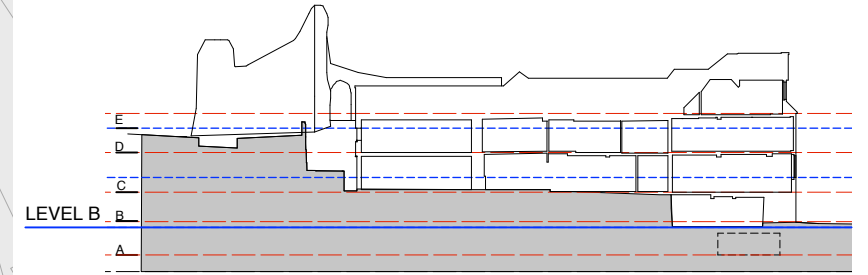
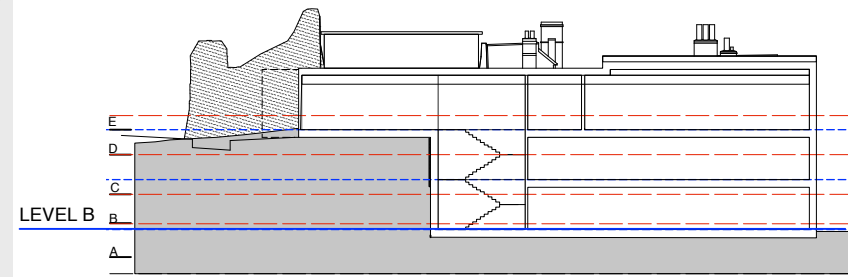
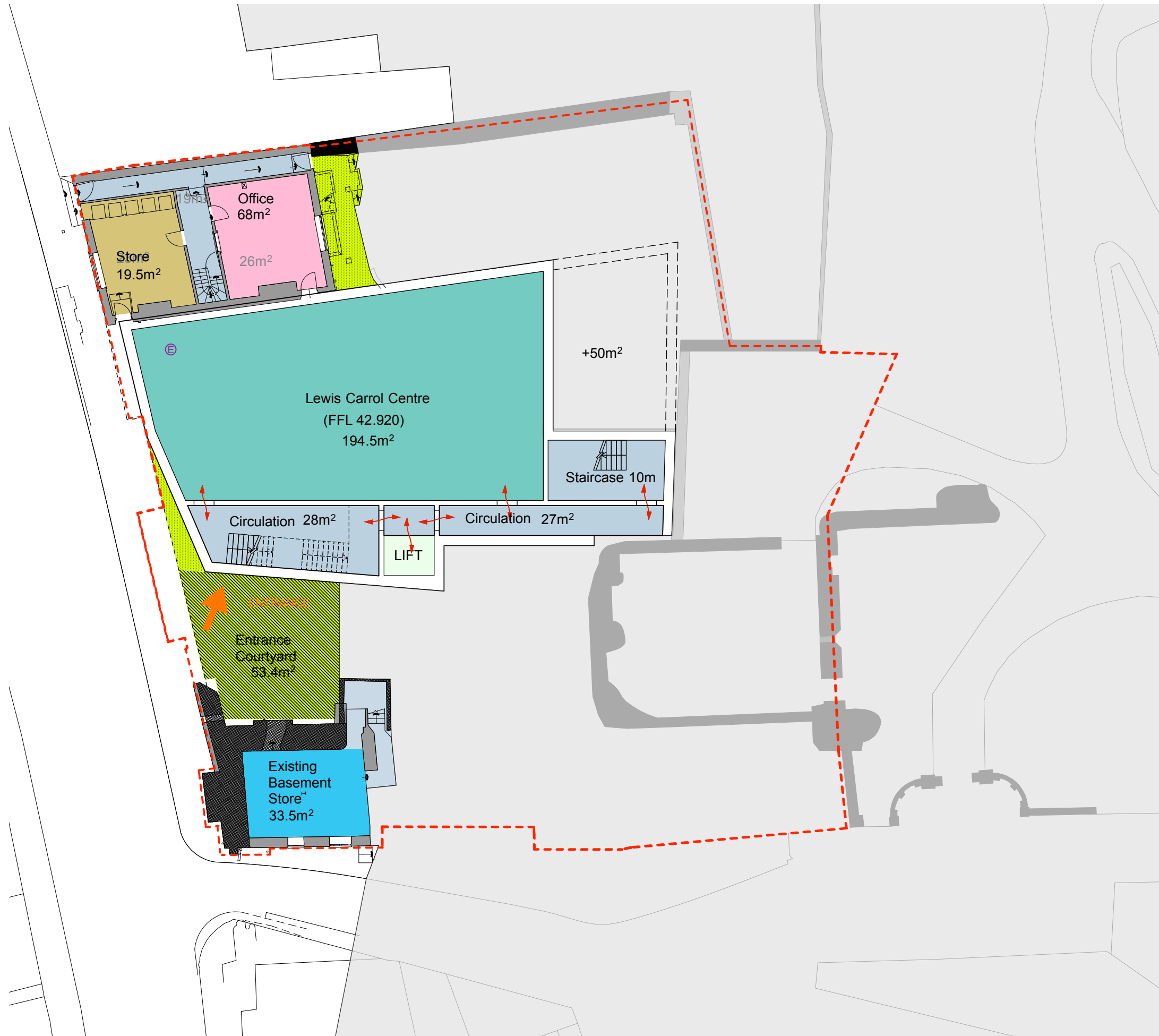
Revisions  
 Revision B: 03.12.18 Consultant team  
 Revision A: 3.10.18 Q.S.  
 First issued: 20.09.17

- Note 1
- Do not scale from this drawing
  - Use figured dimensions only
  - Dimensions shown in millimetres
  - All dimensions given to finished surfaces
  - Not to be used as fabrication drawings
  - Allow for minimum working tolerances
  - Verify all dimensions on site
  - Inform Architect of any discrepancies
  - Refer to Specification/Finishes Schedule
  - Allow for all making good consequent upon the works

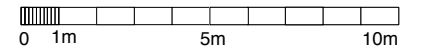
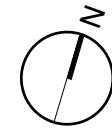
## For Information

No. **GMC/SK/37 Rev B**  
 Scale 1:200 @ A3  
 Date 09/17  
 Project Guildford Museum and Castle  
 Title Option C1: Level B  
 Quarry Street Level Plan  
 (showing existing C20th buildings)

**ZMMA**  
 25b Underwood Street  
 London N1 7LG  
 T +44 (0)20 7251 8888  
 F +44 (0)20 7251 8080  
 E info@zmma.com



----- Approx. site boundary



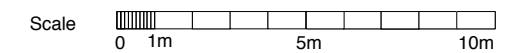
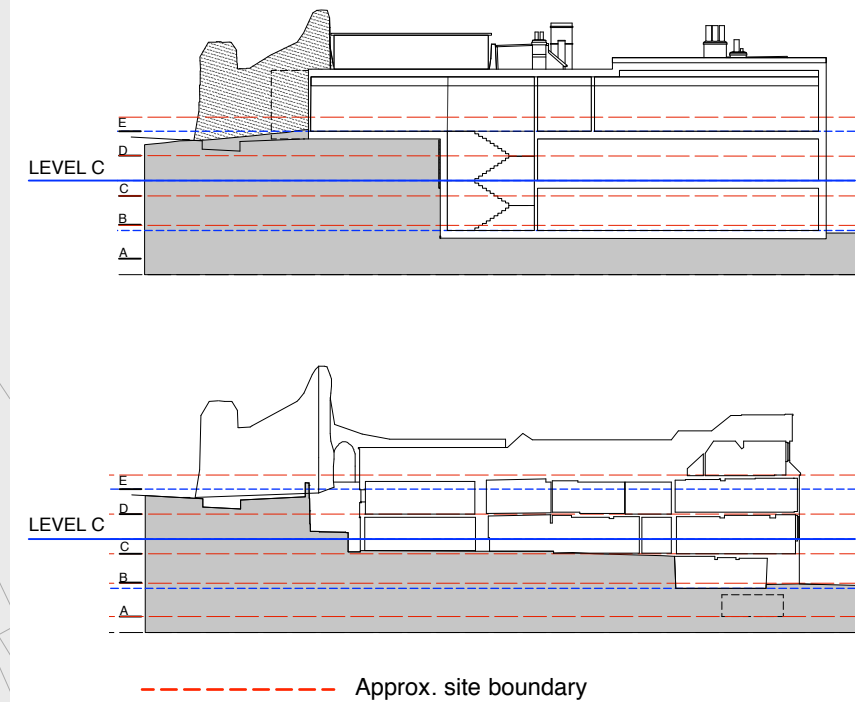
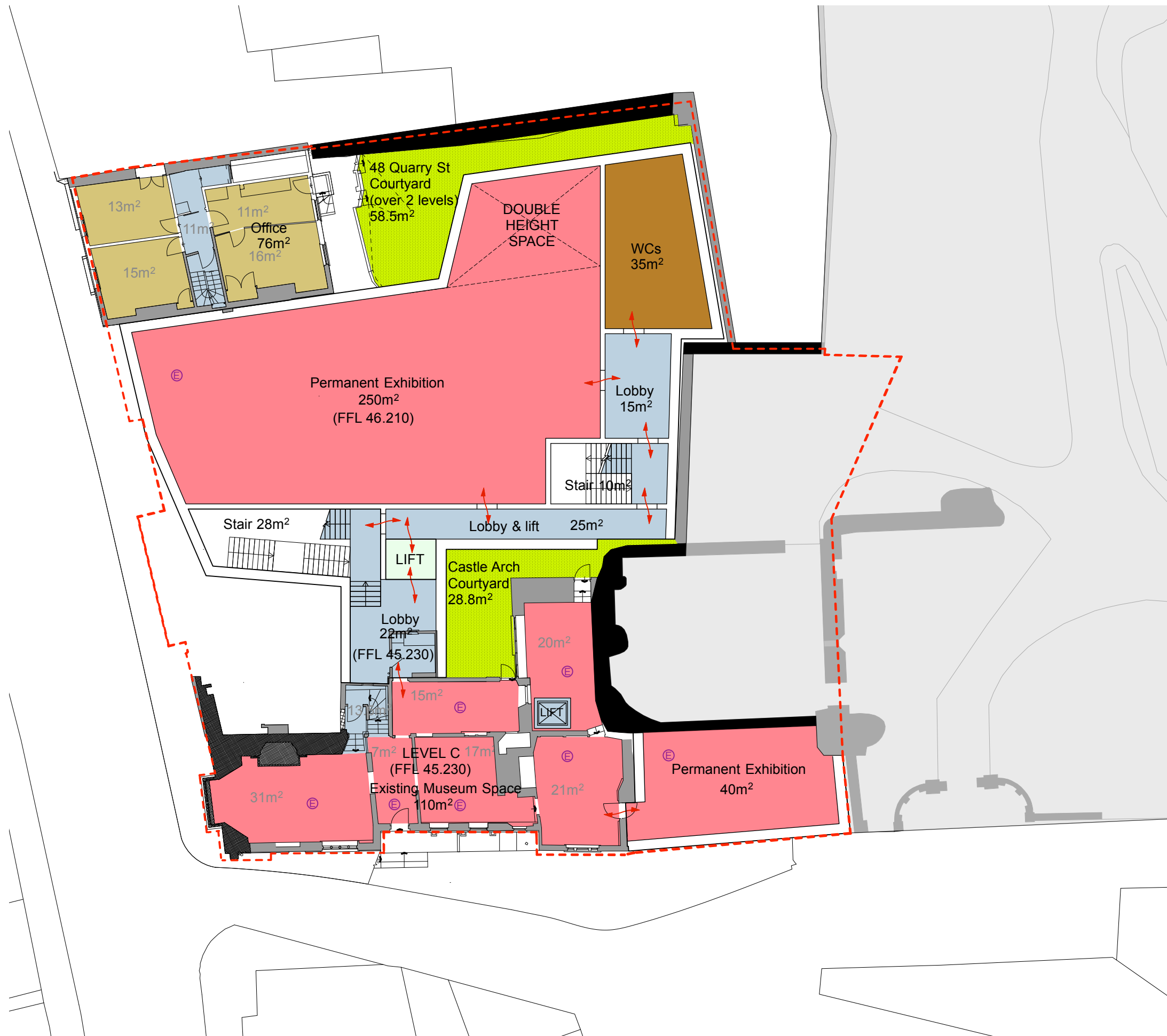
Revisions  
 Revision D: 03.12.18 Consultant team  
 Revision C: 3.10.18 Q.S.  
 Revision B: 15.12.17  
 Revision A: 12.10.17  
 First issued: 20.09.17

Note 1  
 •Do not scale from this drawing  
 •Use figured dimensions only  
 •Dimensions shown in millimetres  
 •All dimensions given to finished surfaces  
 •Not to be used as fabrication drawings  
 •Allow for minimum working tolerances  
 •Verify all dimensions on site  
 •Inform Architect of any discrepancies  
 •Refer to Specification/Finishes Schedule  
 •Allow for all making good consequent upon the works

## For Information

No. **GMC/SK/30 Rev D**  
 Scale 1:200 @ A3  
 Date 09/17  
 Project Guildford Museum and Castle  
 Title Option C1: Level B  
 Quarry Street Level Plan

**ZMMA**  
 25b Underwood Street  
 London N1 7LG  
 T +44 (0)20 7251 8888  
 F +44 (0)20 7251 8080  
 E info@zmma.com



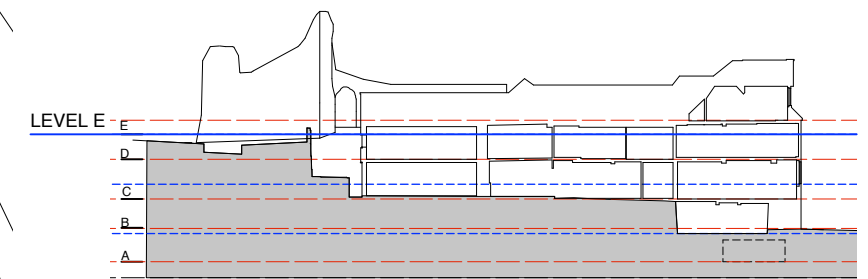
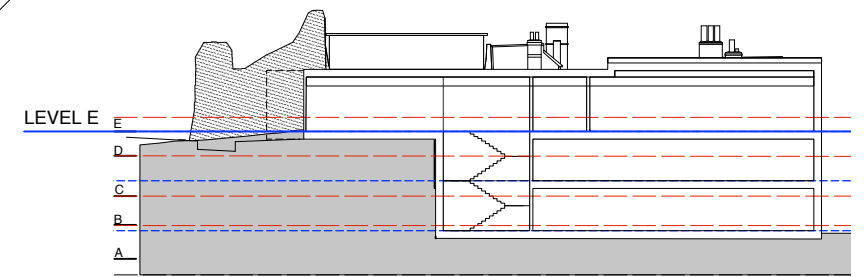
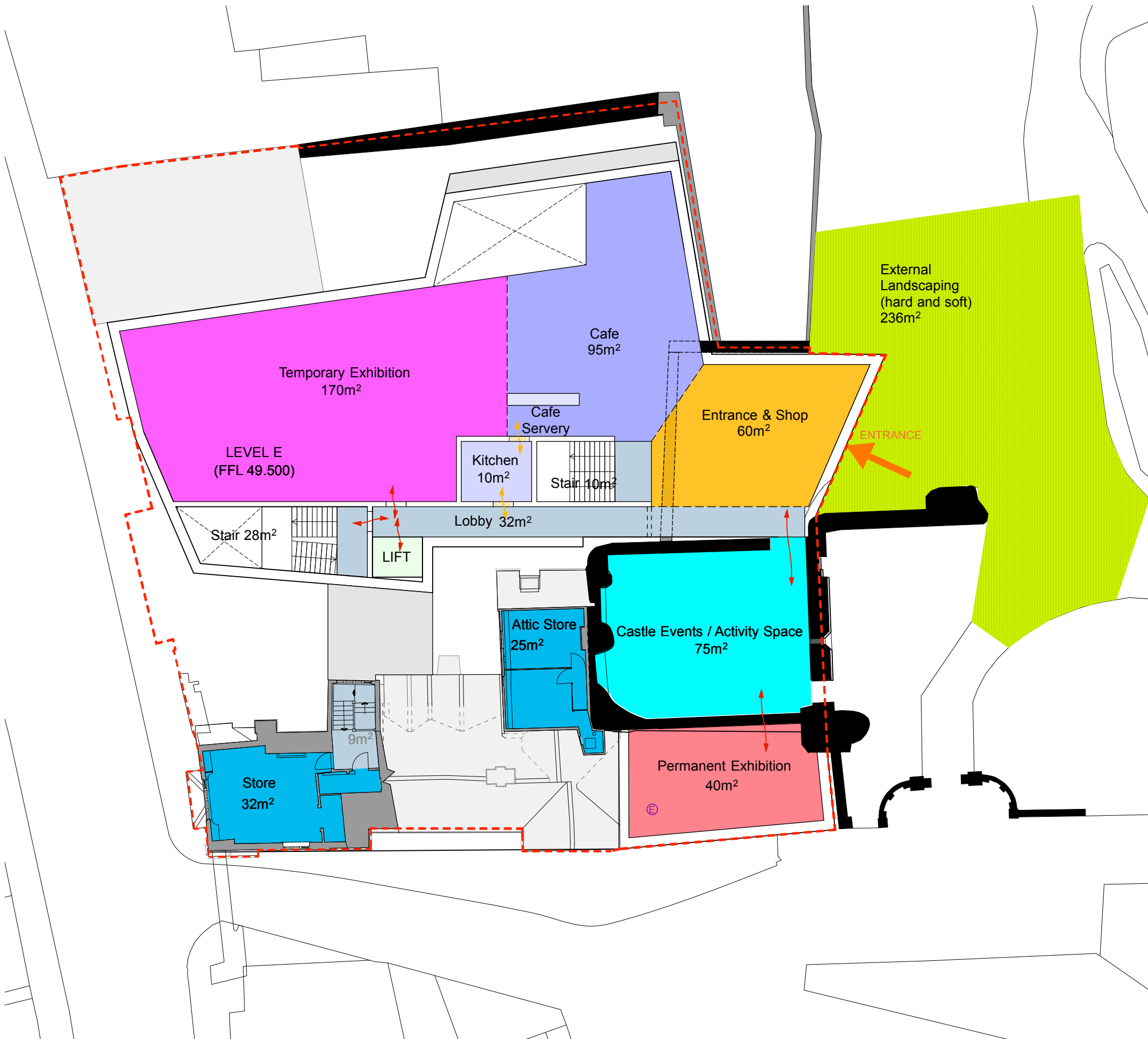
Revisions  
 Revision E: 03.12.18 Consultant team  
 Revision D: 3.10.18 Q.S.  
 Revision C: 15.12.17  
 Revision B: 12.12.17  
 Revision A: 12.10.17  
 First issued: 20.09.17

Note 1  
 • Use figured dimensions only  
 • Dimensions shown in millimetres  
 • All dimensions given to finished surfaces  
 • Not to be used as fabrication drawings  
 • Allow for minimum working tolerances  
 • Verify all dimensions on site  
 • Inform Architect of any discrepancies  
 • Refer to Specification/Finishes Schedule  
 • Allow for all making good consequent upon the works

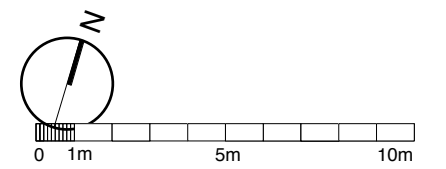
## For Information

No. GMC/SK/31 Rev E  
 Scale 1:200 @ A3  
 Date 09/17  
 Project Guildford Museum and Castle  
 Title Option C1: Middle & Level C Plan

**ZMMA**  
 25b Underwood Street  
 London N1 7LG  
 T +44 (0)20 7251 8888  
 F +44 (0)20 7251 8080  
 E info@zmma.com



----- Approx. site boundary



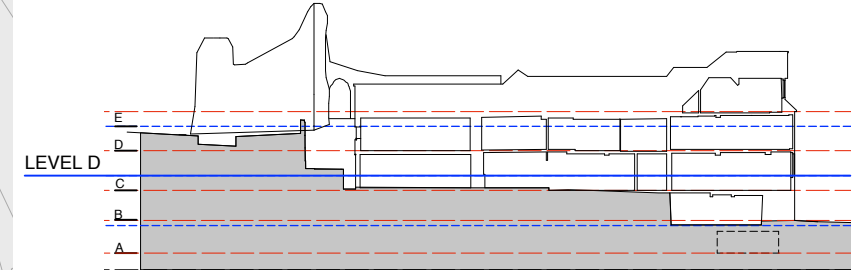
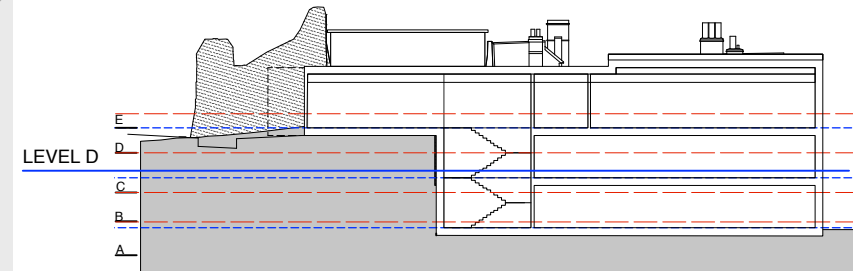
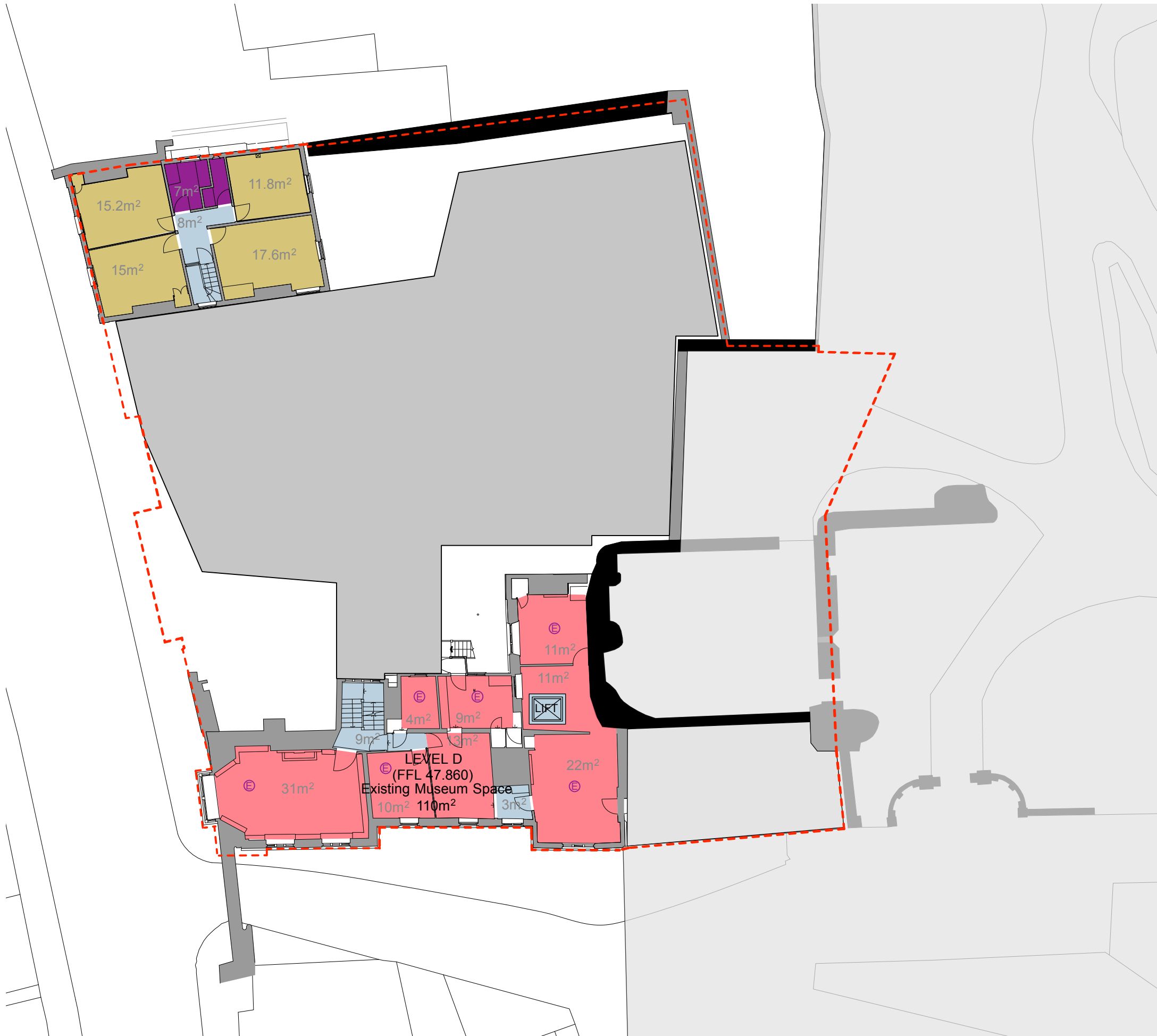
- Revisions
- Revision E: 03.12.18 Consultant team
  - Revision D: 3.10.18 Q.S.
  - Revision C: 15.12.17
  - Revision B: 12.12.17
  - Revision A: 12.10.17
  - First issued: 20.09.17
- Note 1
- use figured dimensions only
  - Dimensions shown in millimetres
  - All dimensions given to finished surfaces
  - Not to be used as fabrication drawings
  - Allow for minimum working tolerances
  - Verify all dimensions on site
  - Inform Architect of any discrepancies
  - Refer to Specification/Finishes Schedule
  - Allow for all making good consequent upon the works

### For Information

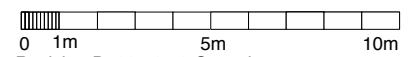
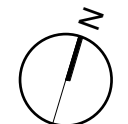
No. GMC/SK/33 Rev E  
 Scale 1:200 @ A3  
 Date 09/17  
 Project Guildford Museum and Castle  
 Title Option C1: Castle Gardens & Level E Plan

**ZMMA**  
 25b Underwood Street  
 London N1 7LG  
 T +44 (0)20 7251 8888  
 F +44 (0)20 7251 8080  
 E info@zmma.com





----- Approx. site boundary



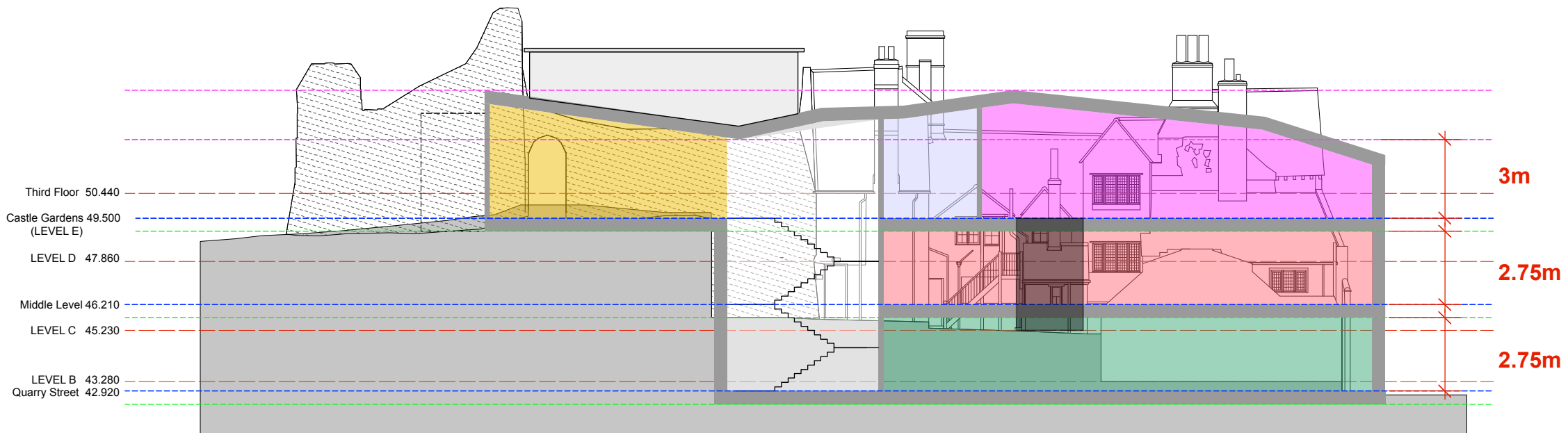
Revisions  
 Revision D: 03.12.18 Consultant team  
 Revision C: 3.10.18 Q.S.  
 Revision B: 15.12.17  
 Revision A: 12.12.17  
 First issued: 20.09.17

Note 1  
 • Do not scale from this drawing  
 • Use figured dimensions only  
 • Dimensions shown in millimetres  
 • All dimensions given to finished surfaces  
 • Not to be used as fabrication drawings  
 • Allow for minimum working tolerances  
 • Verify all dimensions on site  
 • Inform Architect of any discrepancies  
 • Refer to Specification/Finishes Schedule  
 • Allow for all making good consequent upon the works

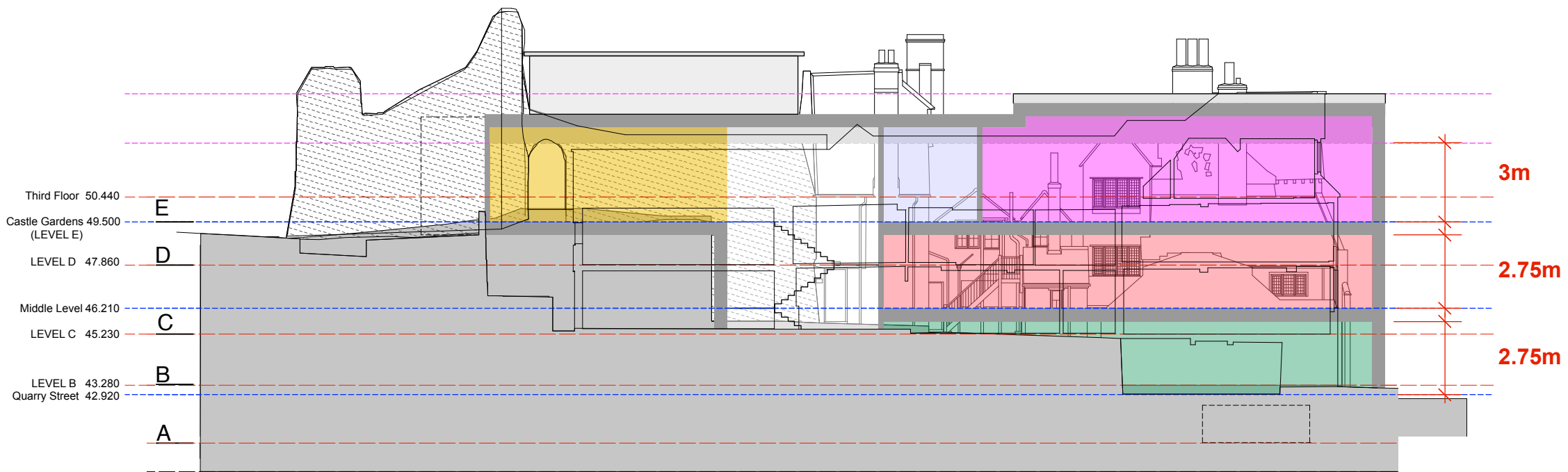
### For Information

No. GMC/SK/32 Rev D  
 Scale 1:200 @ A3  
 Date 09/17  
 Project Guildford Museum and Castle  
 Title Option C1: Level D Plan

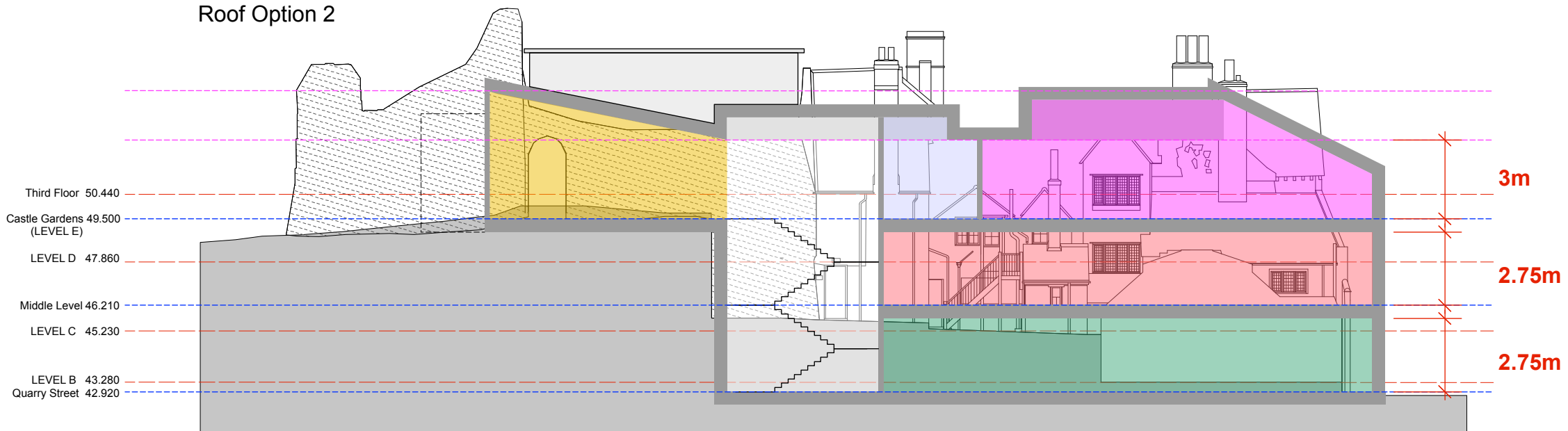
**ZMMA**  
 25b Underwood Street  
 London N1 7LG  
 T +44 (0)20 7251 8888  
 F +44 (0)20 7251 8080  
 E info@zmma.com



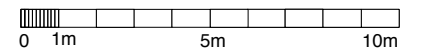
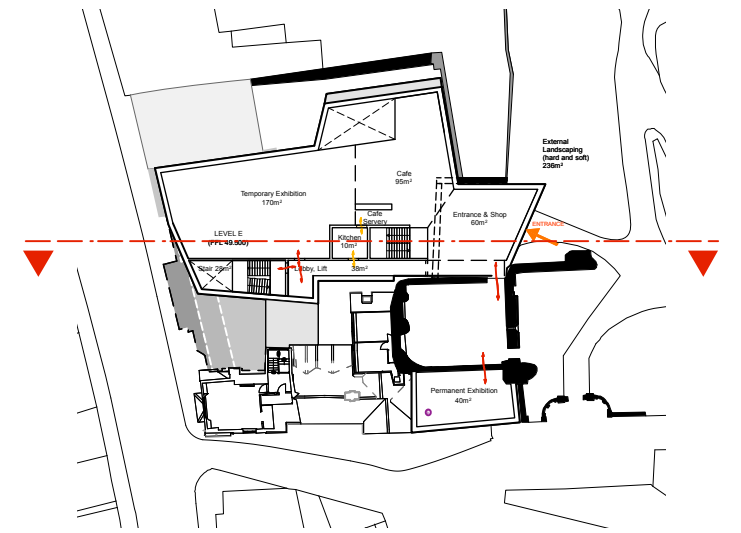
Roof Option 1



Roof Option 2



Roof Option 3



Revisions  
 Revision A 12.10.17  
 First issued: 20.09.17

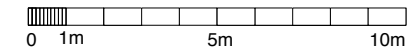
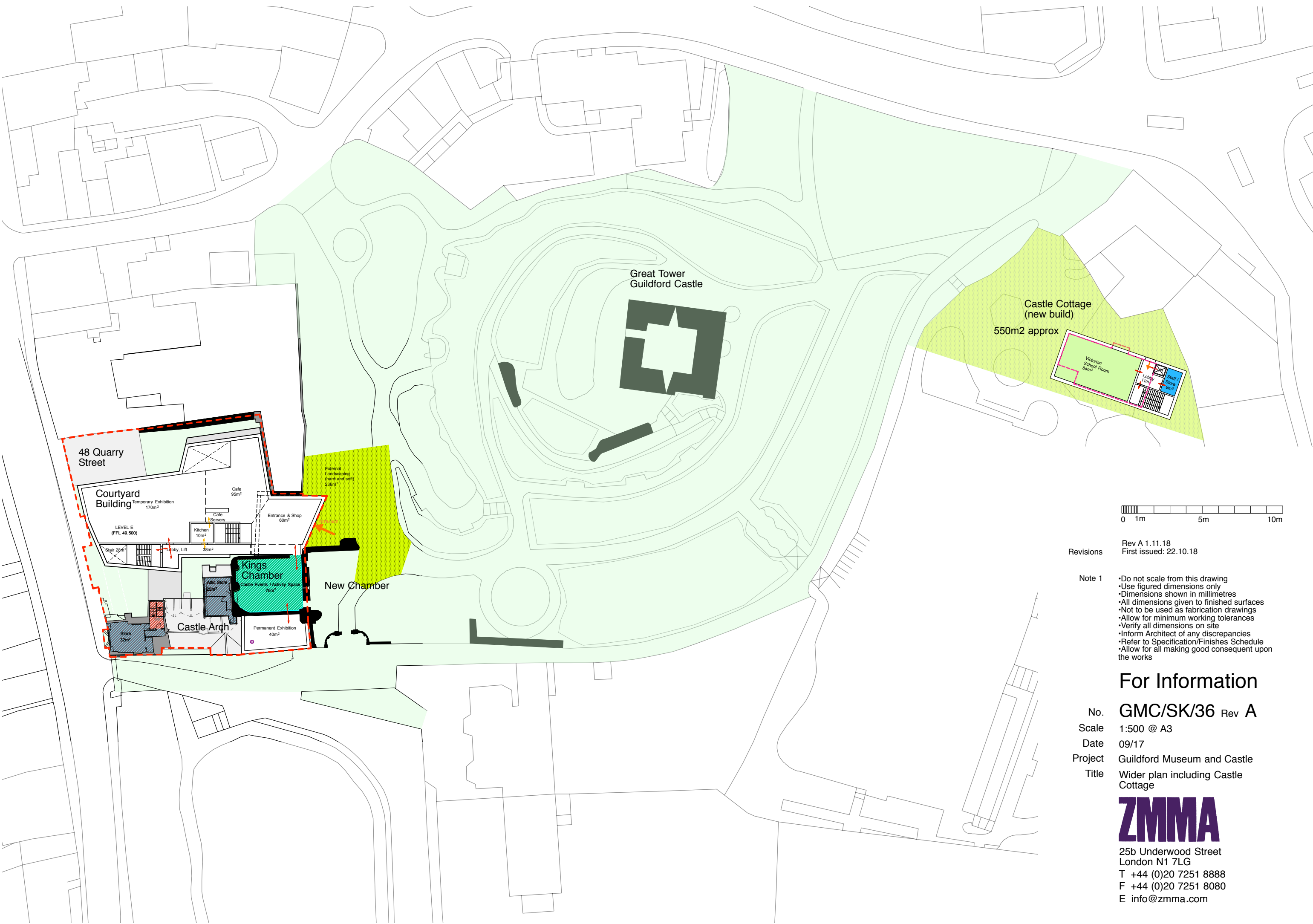
- Note 1
- Do not scale from this drawing
  - Use figured dimensions only
  - Dimensions shown in millimetres
  - All dimensions given to finished surfaces
  - Not to be used as fabrication drawings
  - Allow for minimum working tolerances
  - Verify all dimensions on site
  - Inform Architect of any discrepancies
  - Refer to Specification/Finishes Schedule
  - Allow for all making good consequent upon the works

## For Information

No. **GMC/SK/35 Rev A**  
 Scale 1:200 @ A3  
 Date 09/17  
 Project Guildford Museum and Castle  
 Title Option C1: Long Sections



25b Underwood Street  
 London N1 7LG  
 T +44 (0)20 7251 8888  
 F +44 (0)20 7251 8080  
 E info@zmma.com



Revisions  
 Rev A 1.11.18  
 First issued: 22.10.18

- Note 1
- Do not scale from this drawing
  - Use figured dimensions only
  - Dimensions shown in millimetres
  - All dimensions given to finished surfaces
  - Not to be used as fabrication drawings
  - Allow for minimum working tolerances
  - Verify all dimensions on site
  - Inform Architect of any discrepancies
  - Refer to Specification/Finishes Schedule
  - Allow for all making good consequent upon the works

### For Information

No. **GMC/SK/36 Rev A**  
 Scale 1:500 @ A3  
 Date 09/17  
 Project Guildford Museum and Castle  
 Title Wider plan including Castle Cottage



25b Underwood Street  
 London N1 7LG  
 T +44 (0)20 7251 8888  
 F +44 (0)20 7251 8080  
 E info@zmma.com